



## UKTELEVISION.TV PPTP VPN SETUP GUIDE FOR WINDOWS XP

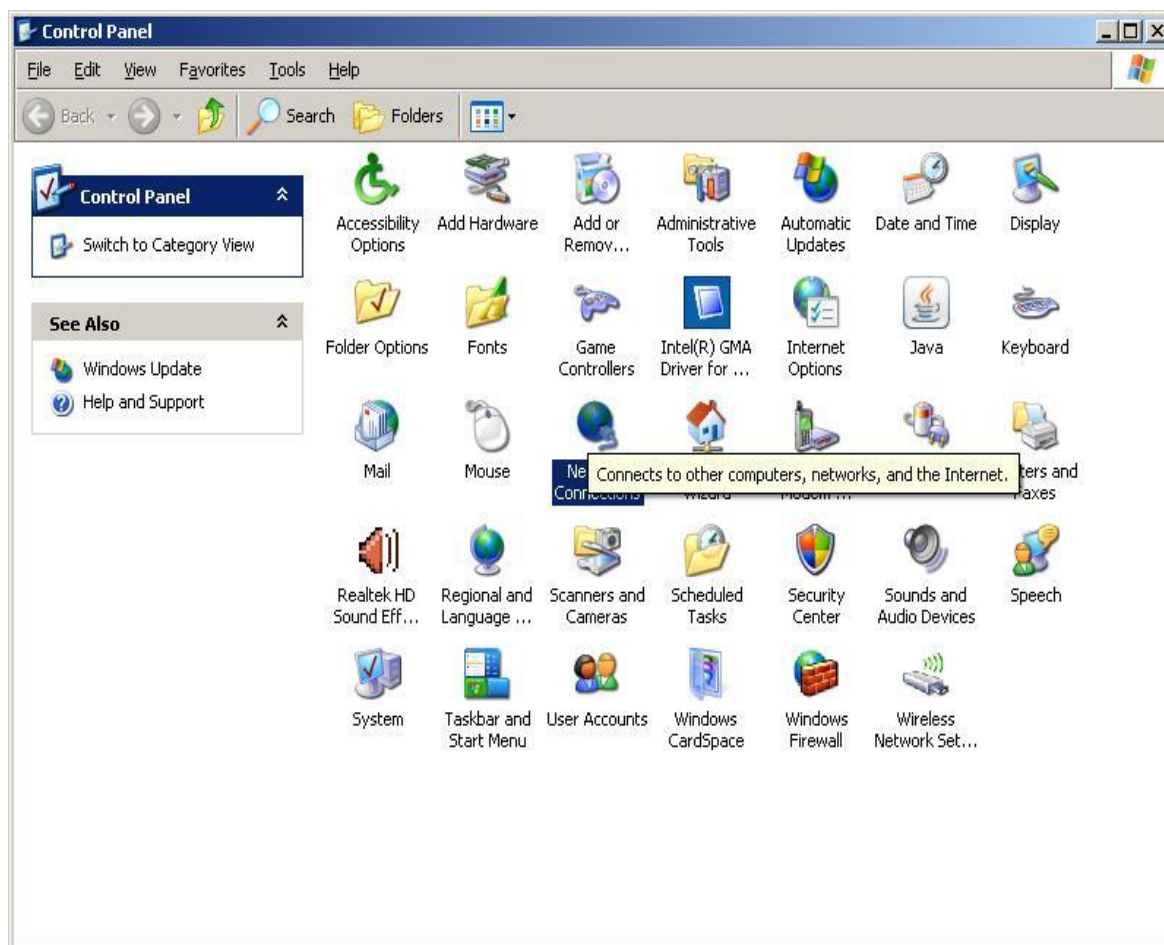
Welcome to the uktelevision.tv PPTP VPN connection setup document for Windows XP users.

TO SET UP A CONNECTION TO THE UKTELEVISION.TV PPTP VPN SERVICE ON WINDOWS XP, PLEASE FOLLOW THESE STEPS:

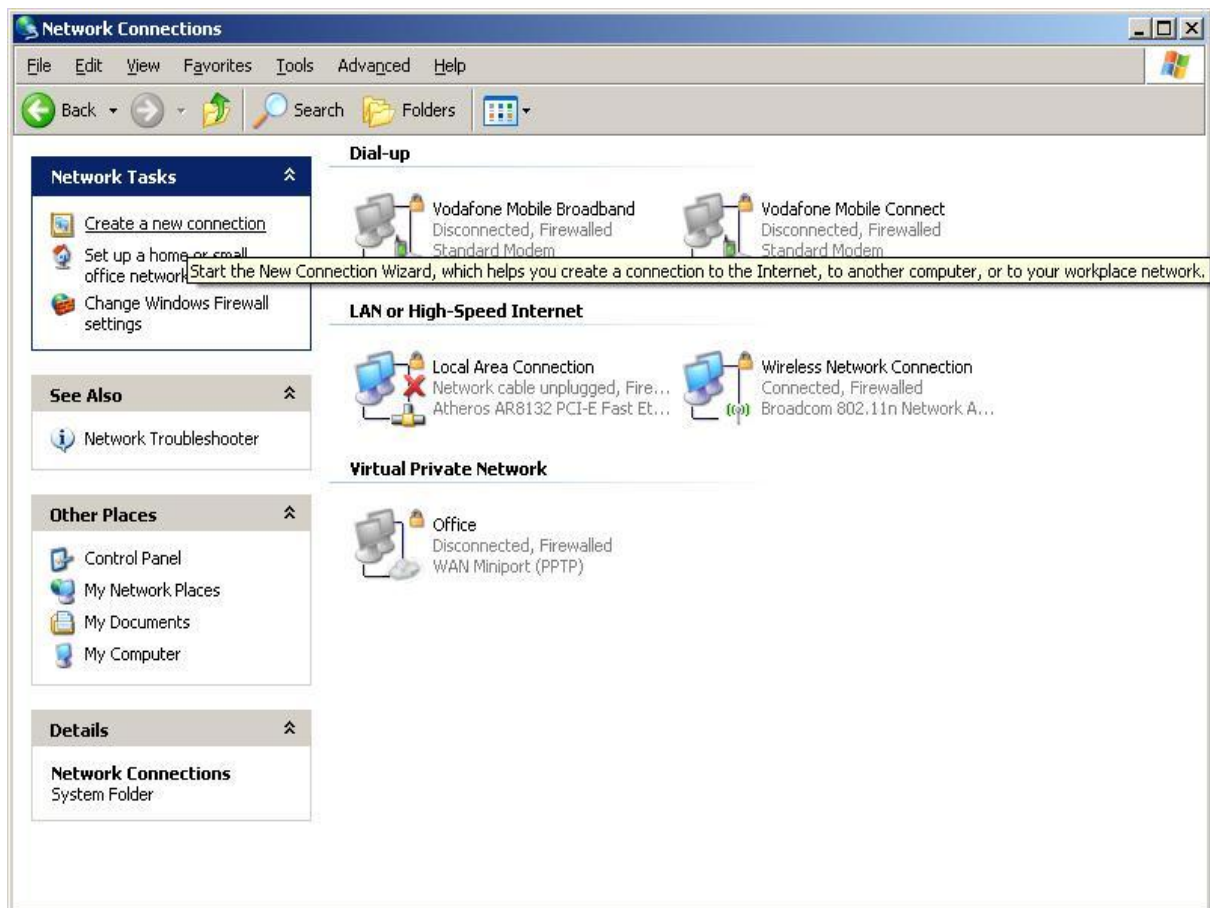
1. Click **Start**, and then click **Control Panel**.



2. In Control Panel, double-click **Network Connections**.



### 3. Click **Create a new connection**.



4. In the Network Connection Wizard, click **Next**.



5. Click **Connect to the network at my workplace**, and then click **Next**.

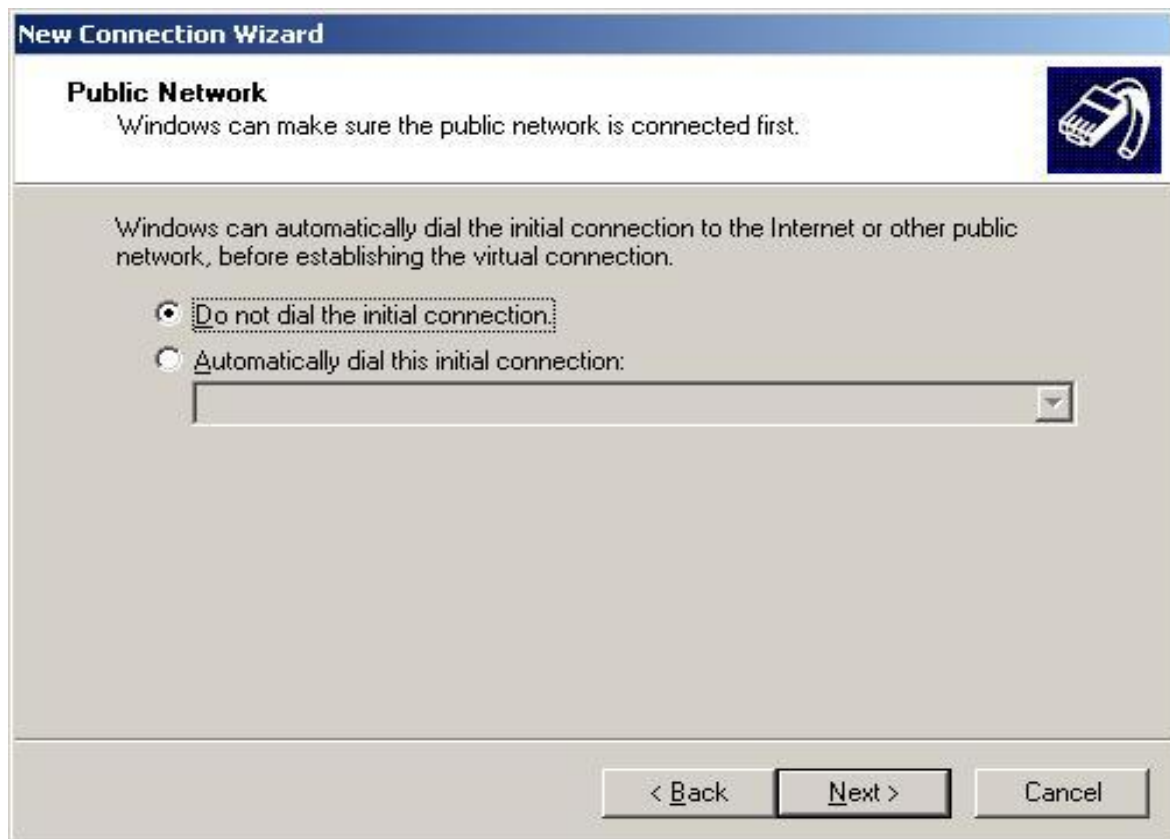


6. Click **Virtual Private Network connection**, and then click **Next**.




7. Click **Do not dial the initial connection.**

8. Click **Next.**



9. Type descriptive name for the connection for example 'uktelevision VPN' and then click **Next**.

A screenshot of the 'New Connection Wizard' dialog box in Windows XP. The title bar reads 'New Connection Wizard'. The main area is titled 'Connection Name' and contains the instruction 'Specify a name for this connection to your workplace.' Below this, there is a text box with the text 'uktelevision.tv' entered. To the right of the text box is a small icon of a network card. At the bottom of the dialog box are three buttons: '< Back', 'Next >', and 'Cancel'.

**New Connection Wizard**

**Connection Name**  
Specify a name for this connection to your workplace.

Type a name for this connection in the following box.

Company Name

uktelevision.tv

For example, you could type the name of your workplace or the name of a server you will connect to.

< Back   Next >   Cancel



10. Please enter one of the following into the Server/IP address field.

[pptp.uktelevision.tv](http://pptp.uktelevision.tv)

[pptp1.uktelevision.tv](http://pptp1.uktelevision.tv)

(Please note - if connecting via a Mobile Device please use [pptp.uktelevision.tv](http://pptp.uktelevision.tv))

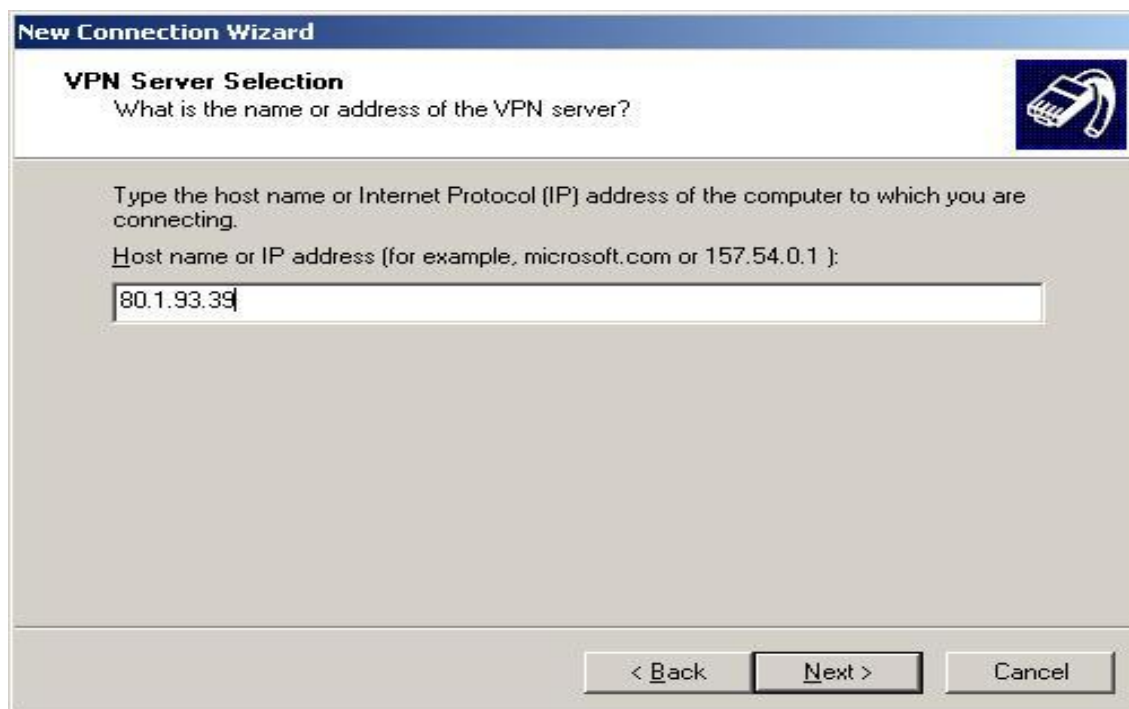
If your Device requires you to enter the direct IP Address instead of the above DNS forwarding addresses, they are as follows:

pptp: '80.1.93.39'

pptp1: '80.1.93.40'

(Please note - these addresses may change when we apply future updates to the service, so ideally please use the text based [[pptp.uktelevision.tv](http://pptp.uktelevision.tv)] DNS addresses stated above.)

Then click **Next**.



11. Click **'Anyone's use'** if you want the connection to be available to anyone who logs on to the computer, or click **'My use only'** to make it available only when you log on to the computer, and then click **Next**.

12. Click to select the **Add a shortcut to this connection to my desktop** check box if you want to create a shortcut on the desktop, and then click **Finish**.



13. If you are prompted to connect, click **'Yes'** if you wish to connect now, or you can run the Icon from your desktop at a later time.

14. You will see this screen pop up.

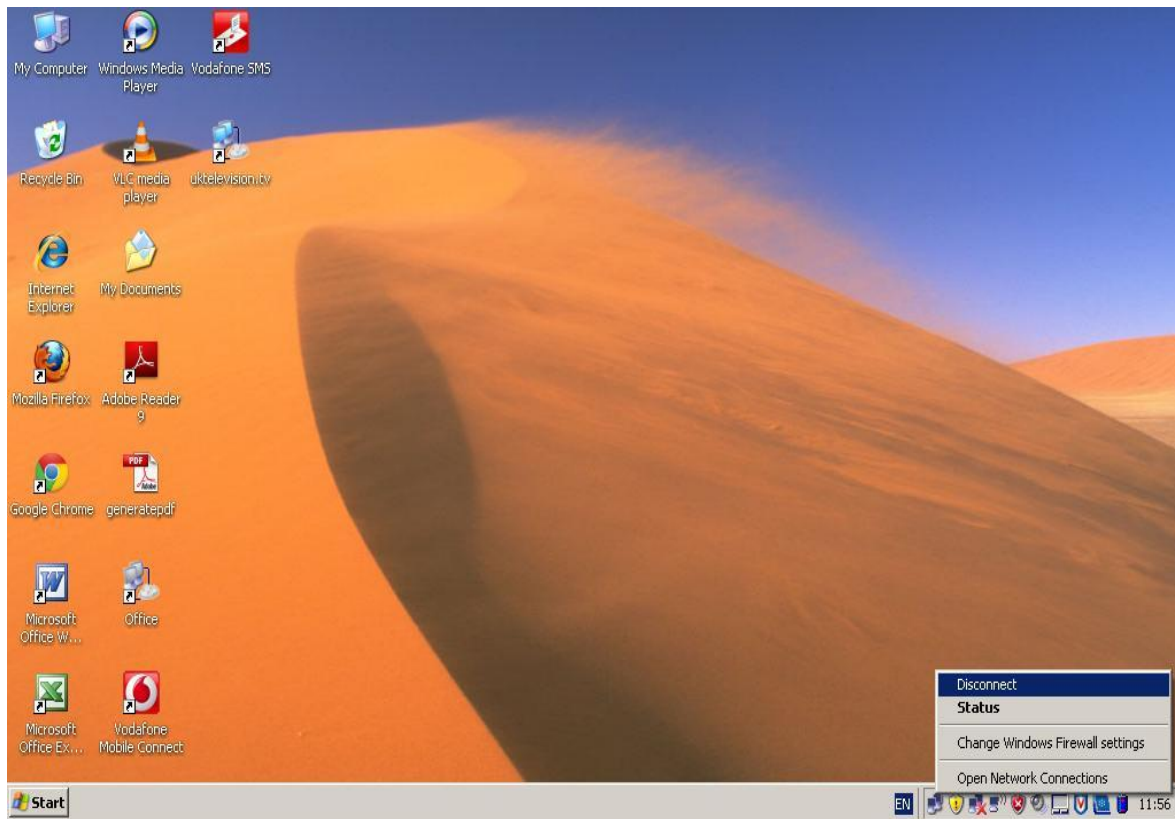


15. Enter your uktelevision.tv 'Username' and 'Password' and click 'Connect'

You may wish to tick the 'Save this user name and password for the following users:' box.

You are now connected to the uktelevision.tv PPTP VPN service.

16. To disconnect, right click the VPN connection network icon from Windows System Tray and click 'disconnect'



17. To re-connect simply click on the 'uktelevision.tv' desktop icon.