



UKTELEVISION.TV PPTP VPN SETUP GUIDE FOR WINDOWS 7

Welcome to the uktelevision.tv PPTP VPN connection setup document for Windows 7 users.

TO SETUP YOUR VPN CONNECTION, PLEASE FOLLOW THESE STEPS:

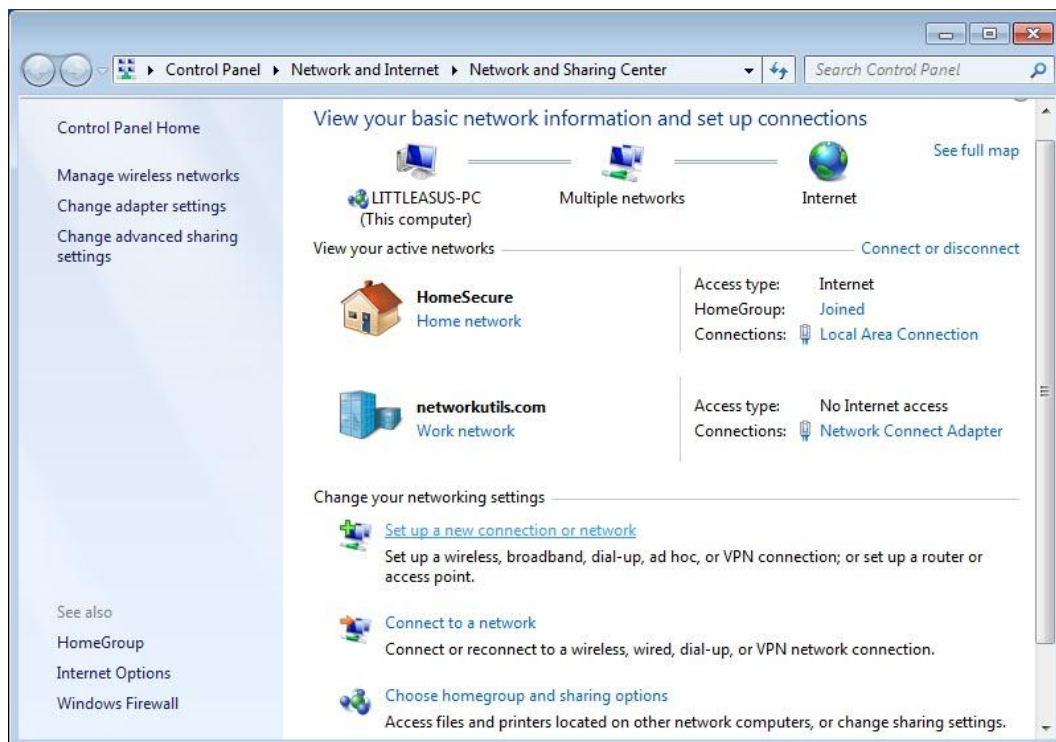
1. From the desktop, click the Network icon in the Windows tray (bottom right corner)

You should see something similar following pop up



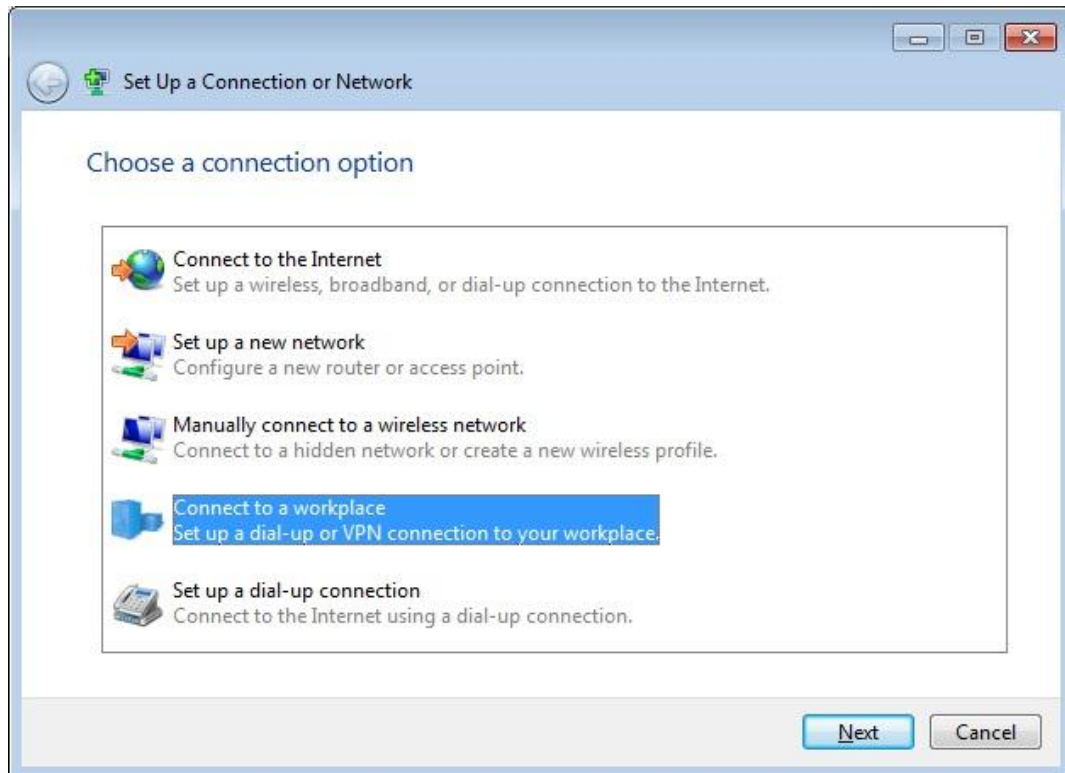
Click Open Network and Sharing Center, at the bottom of the pop up

2. You should see the following screen



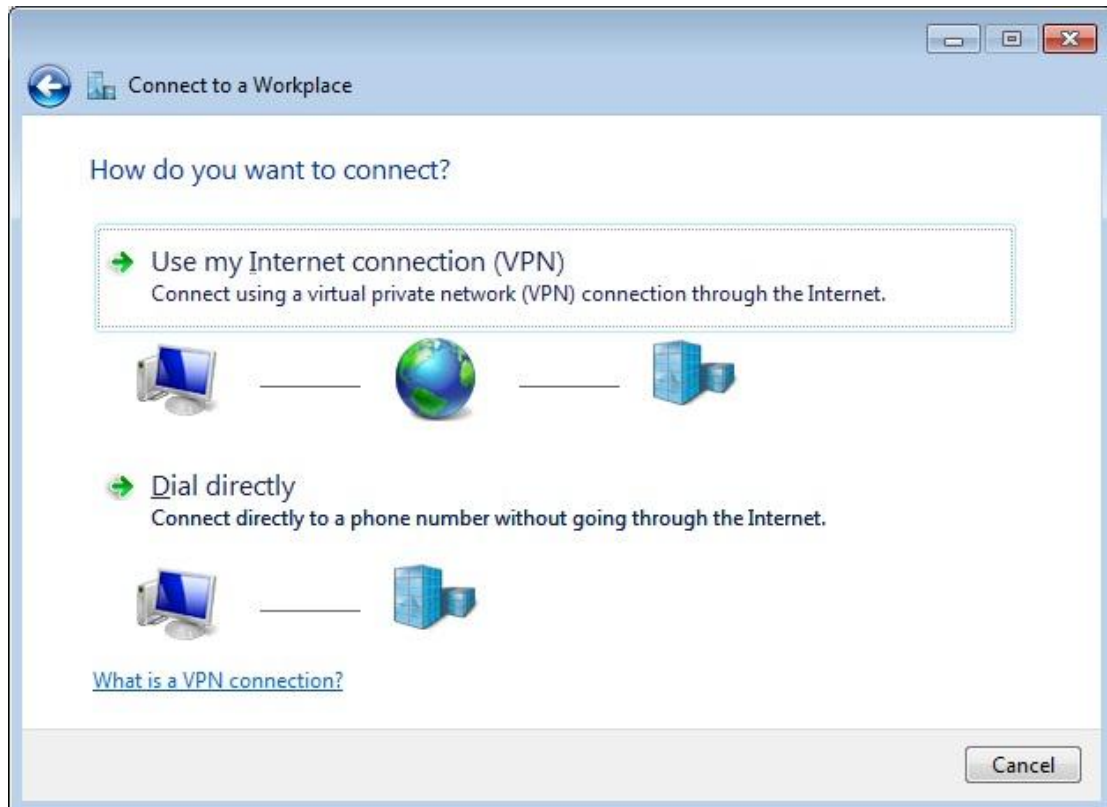
3. Click 'Setup a new connection or network'

4. You will see the following screen.



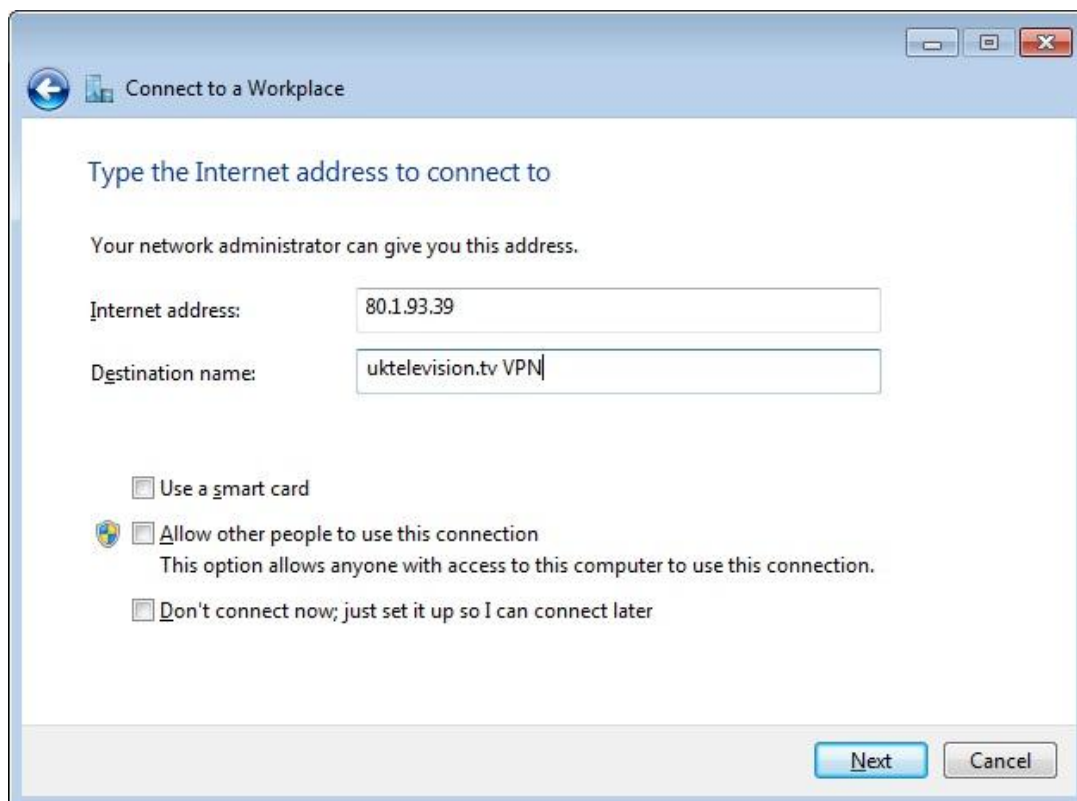
5. Click 'Connect to a workplace'

6. You will see the following screen.



7. Click 'Use my Internet connection (VPN)'.

8. You will now see the following screen.



Enter the Server Address/Internet Address:

Please enter one of the following into the Server/IP address field.

pptp.uktelevision.tv

pptp1.uktelevision.tv

(Please note - if connecting via a Mobile Device please use

pptp.uktelevision.tv)



If your Device requires you to enter the direct IP Address instead of the above DNS forwarding addresses, they are as follows:

pptp: '80.1.93.39'

pptp1: '80.1.93.40'

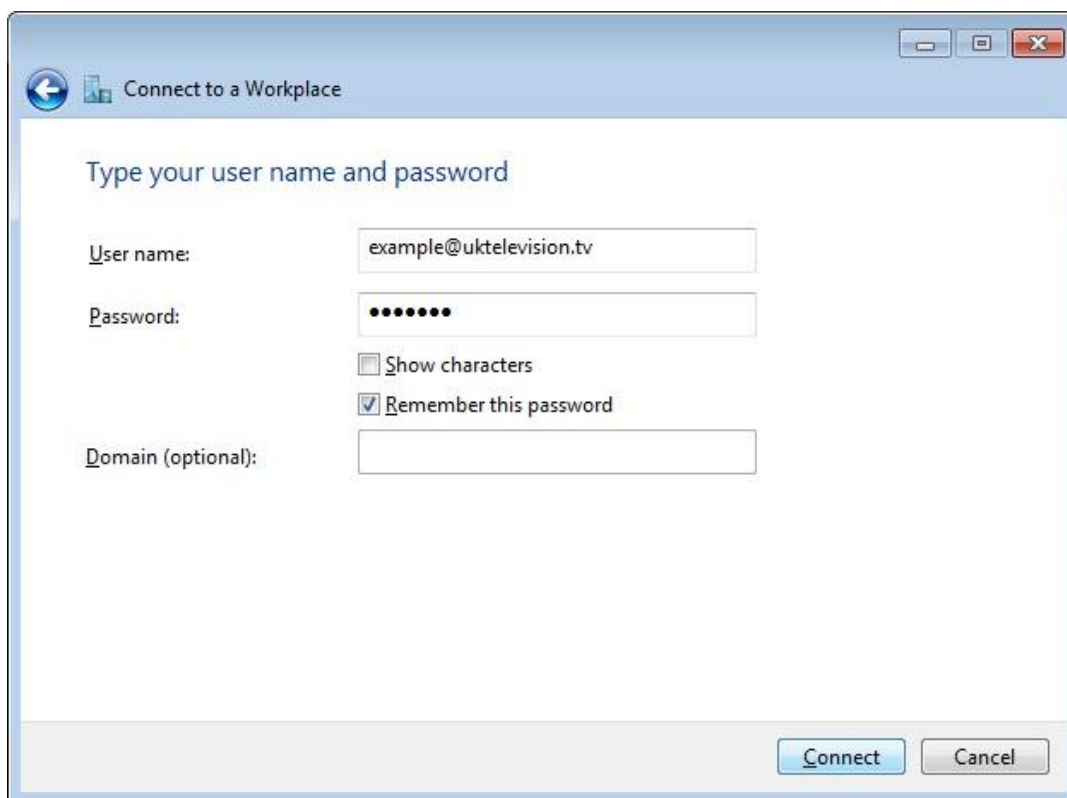
(Please note - these addresses may change when we apply future updates to the service, so ideally please use the text based [pptp.uktelevision.tv] DNS addresses stated above.)

You may enter anything you like into 'Destination name'.

This will be used for your reference only.

Leave all of the boxes below un-ticked (as above) and then click 'Next'

9. You will see the following screen

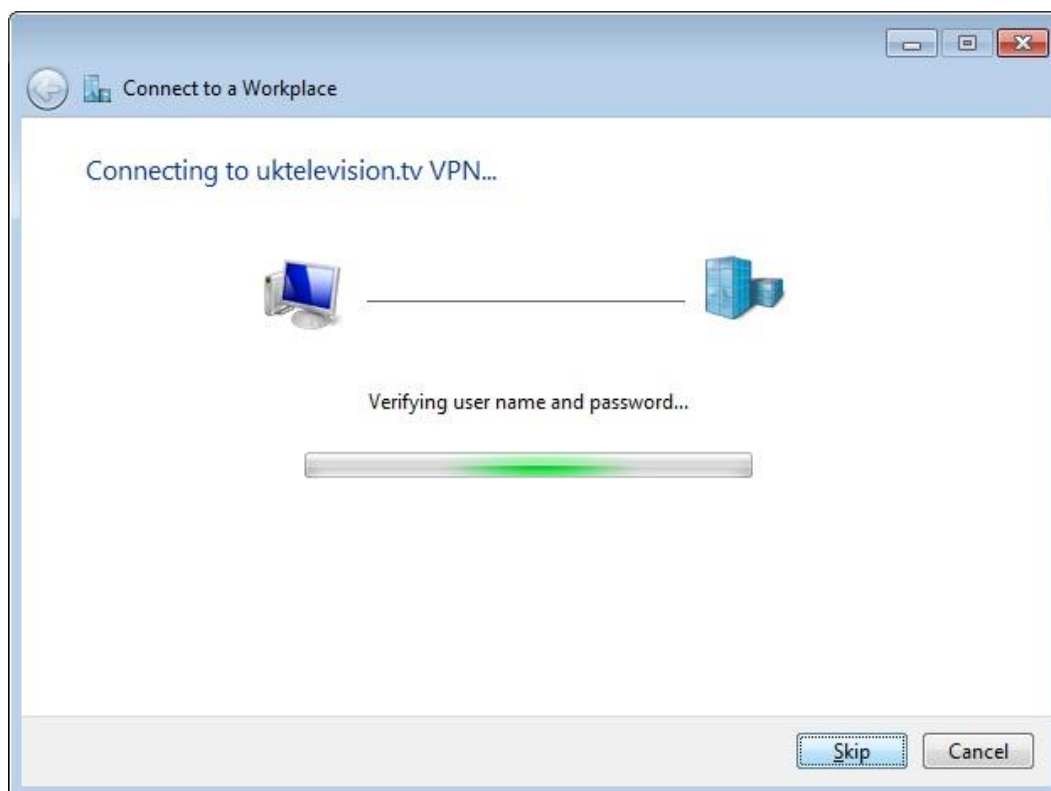


10. Enter the 'email address' and 'password' you used to create your uktelevision.tv account.

You may also wish to click the 'Remember this password' box

11. Now click 'Connect'

12. You will see the following screen while your computer makes the initial connection to the uktelevision.tv VPN server.



13. Congratulations you have successfully connected to the uktelevision.tv PPTP VPN service.

14. You should now see the VPN connection as 'Connected' when you click the Network icon in the Windows Tray (bottom right corner of desktop)



You can now connect and disconnect from the service by clicking the button.