

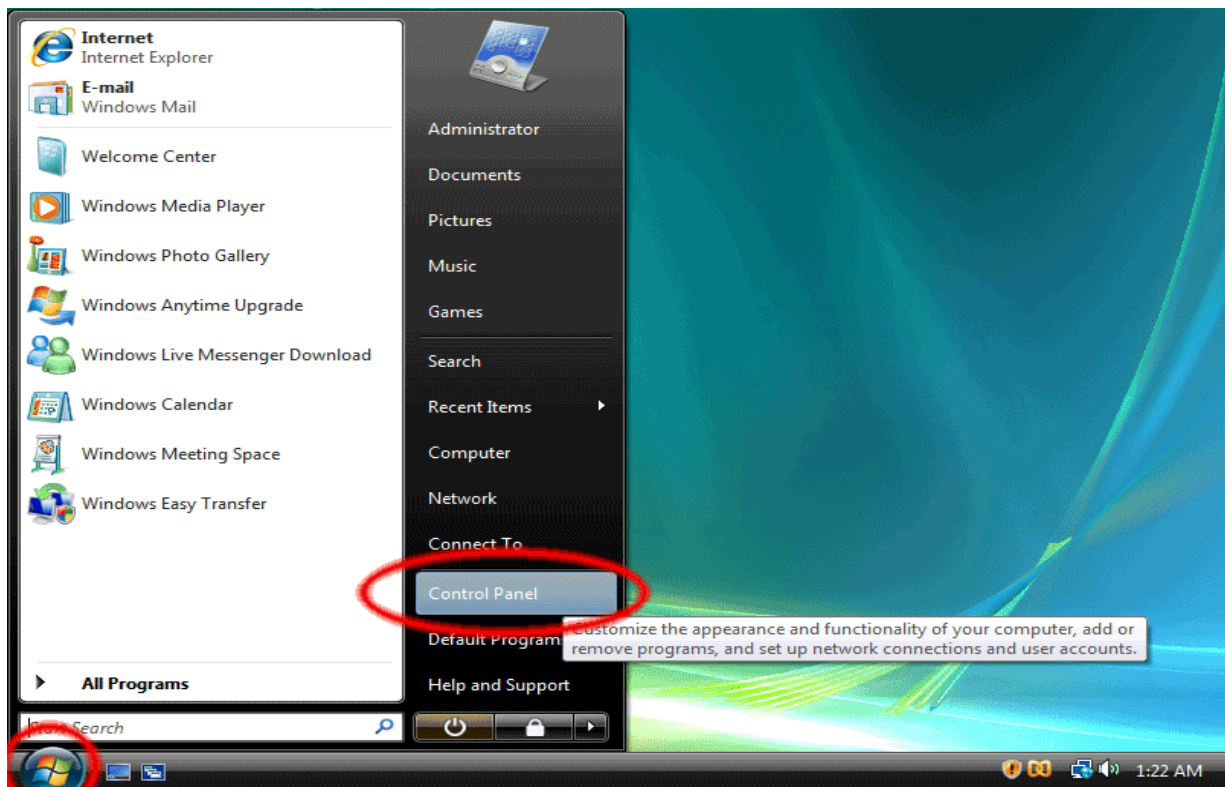


UKTELEVISION.TV PPTP VPN SETUP GUIDE FOR WINDOWS VISTA

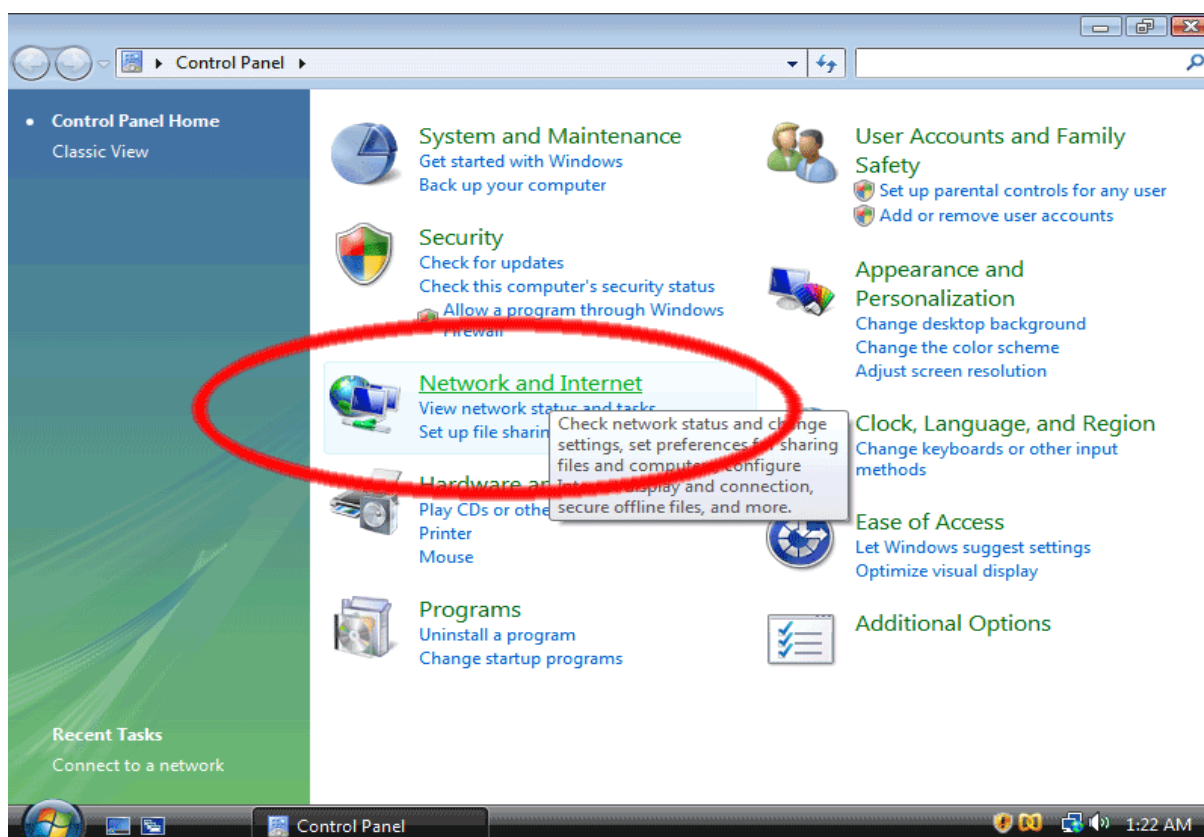
Welcome to the uktelevision.tv PPTP VPN setup document for Windows Vista users.

THE FOLLOWING STEPS WILL GUIDE YOU THROUGH THE SETUP PROCESS TO HELP YOU TO CONNECT TO THE UKTELEVISION.TV SERVICE.

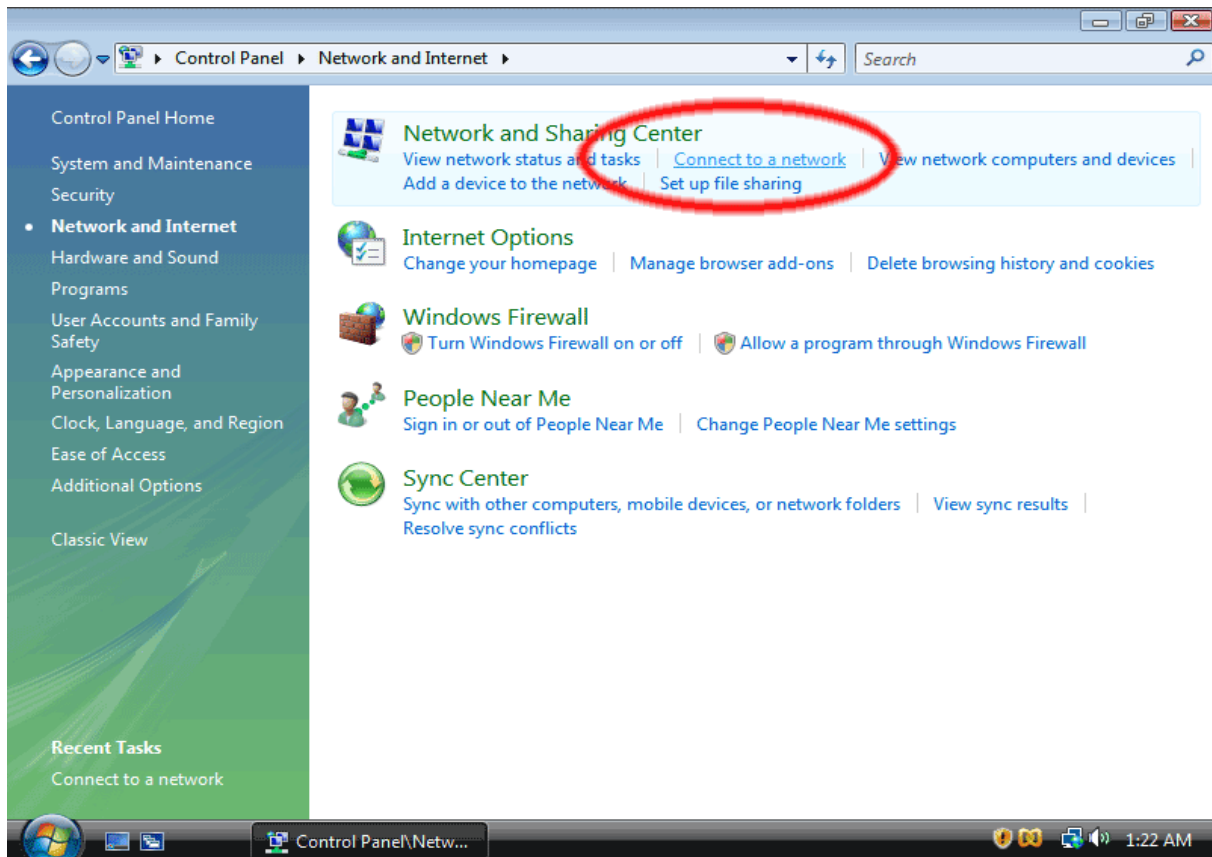
1. Click on the Start button and click “Control Panels”. This opens up the “Control Panel Home.”



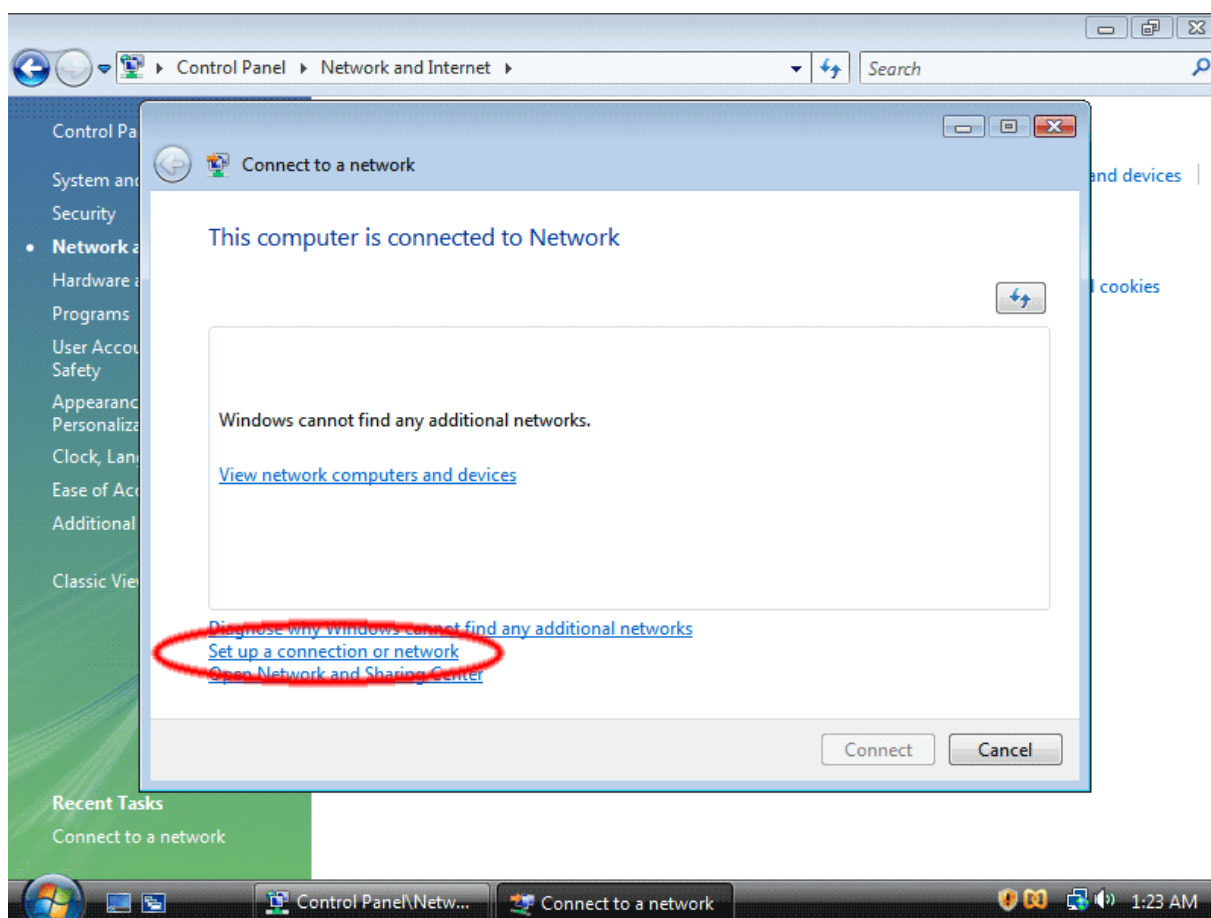
2. Next, click on the “Network and Internet” control panel, which is circled in red below.



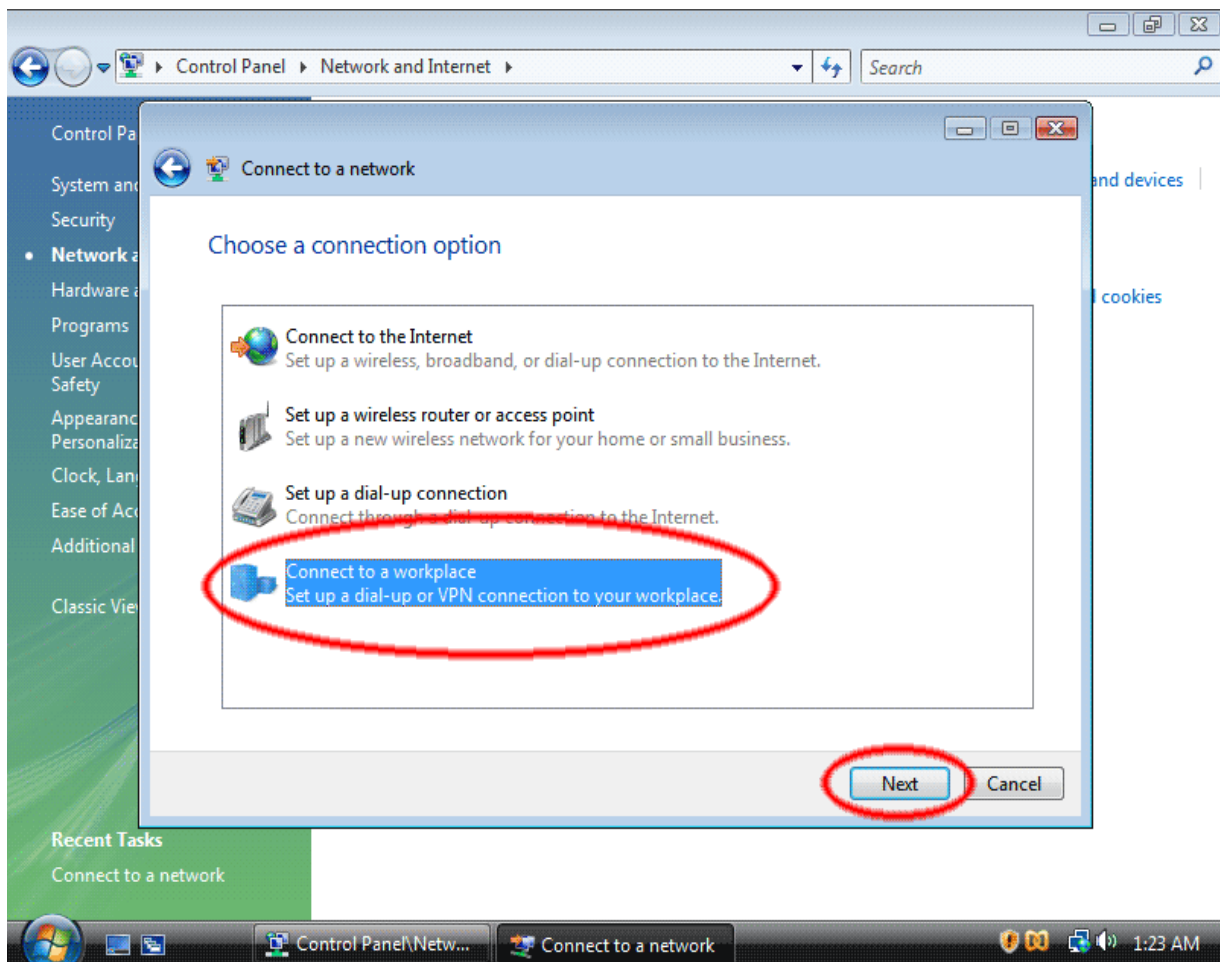
3. Next, click on “Connect to a network.”



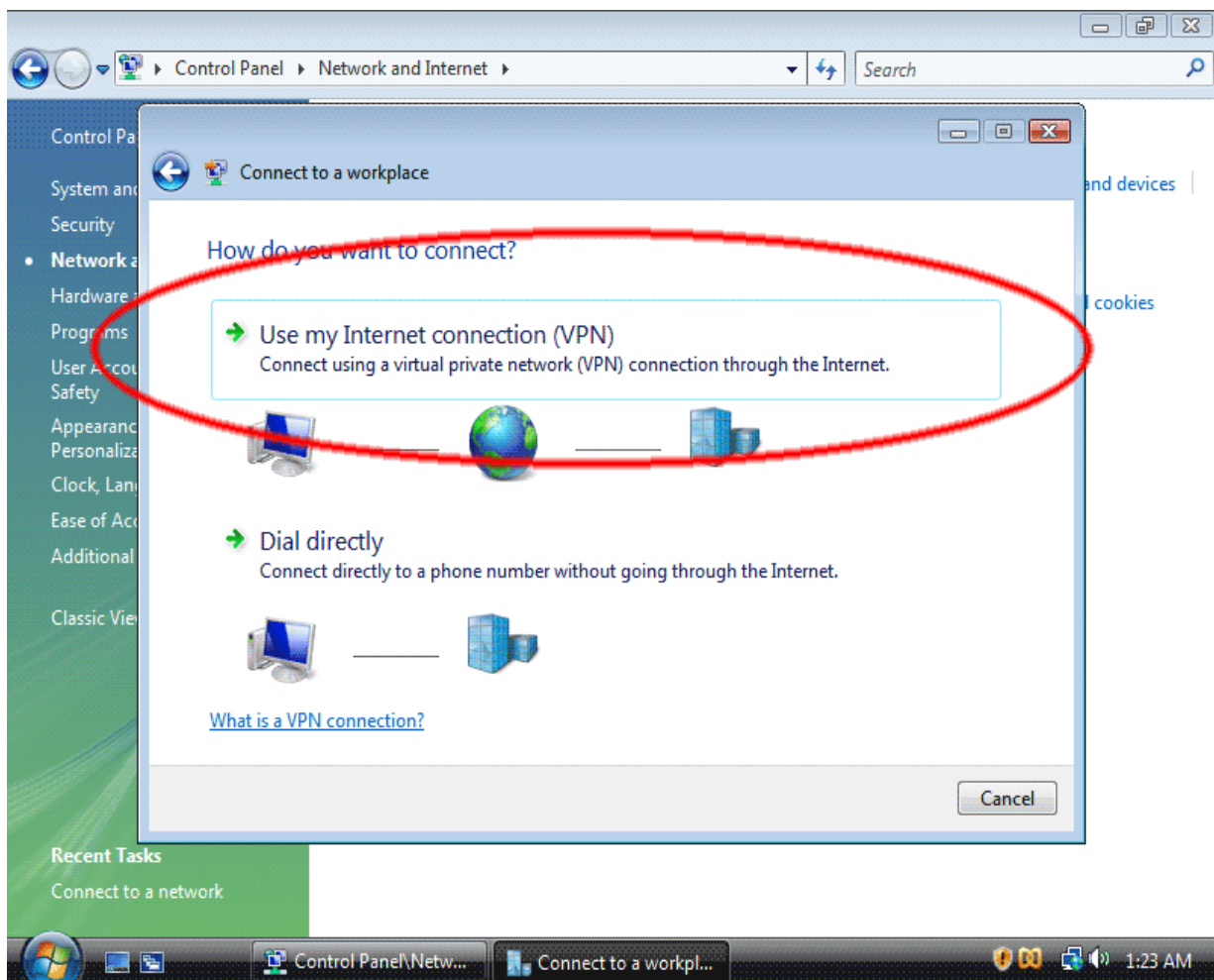
4. The next screen may not look quite like this if you have networks already defined. In any case, click on "Set up a connection or Network."



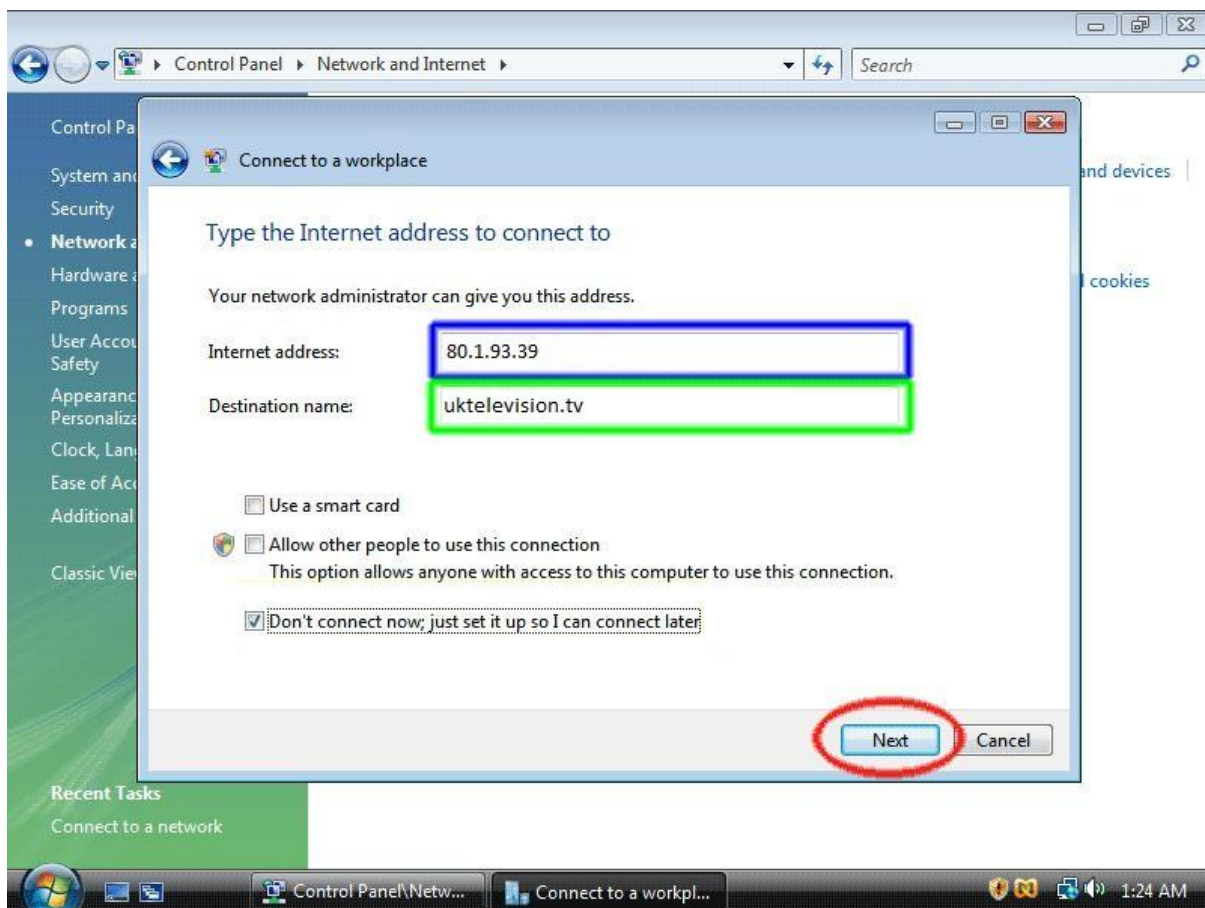
5. Click on “Connect to a workplace” then click “Next.”



6. Next click “Use my Internet connection (VPN).”



7. Enter the server information as shown below.





8. Enter the Server Address:

Please enter one of the following into the Server/Internet address field (highlighted in blue above)

pptp.uktelevision.tv
pptp1.uktelevision.tv

(Please note - if connecting via a Mobile Device please use pptp.uktelevision.tv)

If your Device requires you to enter the direct IP Address instead of the above DNS forwarding addresses, they are as follows:

pptp: '80.1.93.39'
pptp1: '80.1.93.40'

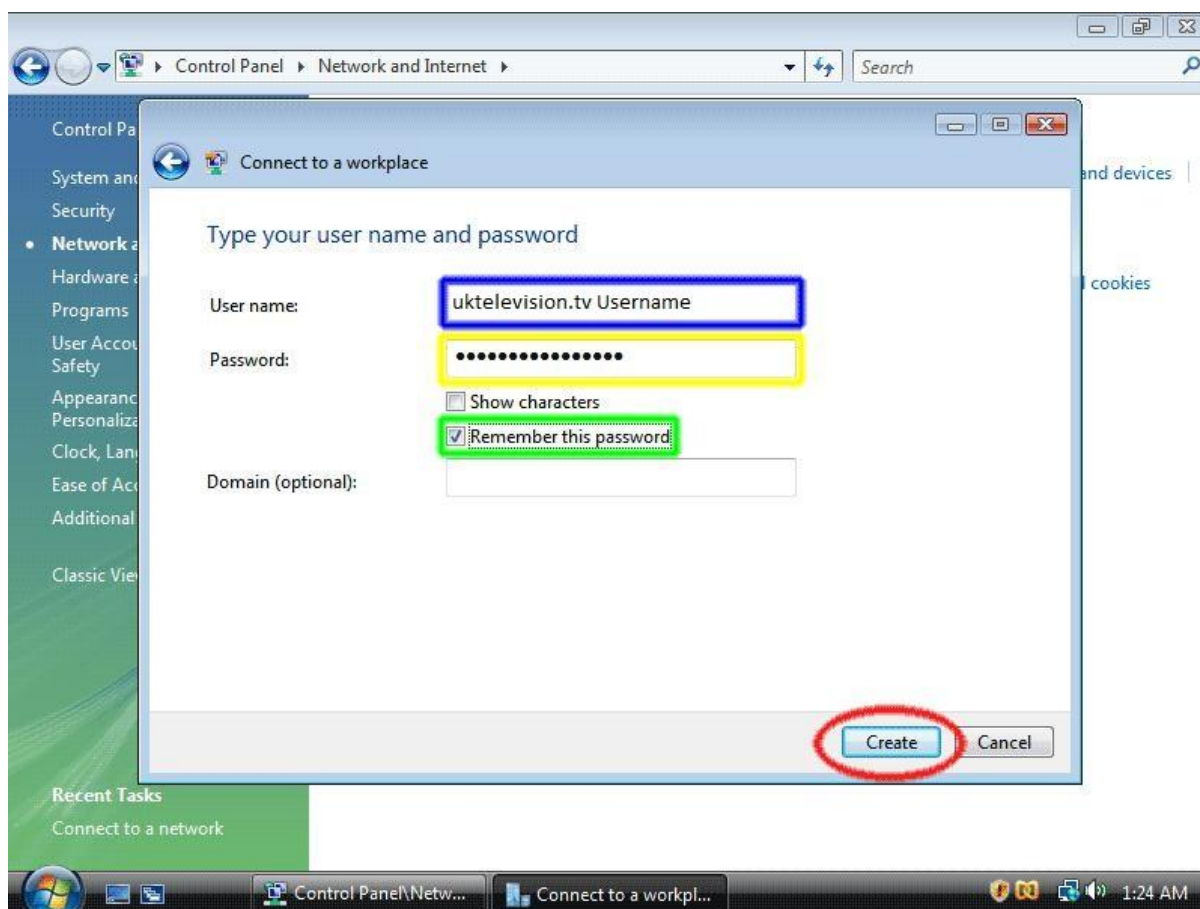
(Please note - these addresses may change when we apply future updates to the service, so ideally please use the text based [pptp.uktelevision.tv] DNS addresses stated above.)

9. In the text box labelled 'Destination name' (highlighted in green) type 'uktelevision.tv'.

This is the name of the connection, and will show up in the "Connect to a network" screen when we're done. You can type any name you wish into this box, as it is for your reference only.

10. Then click the "Next" button.

11. You will see the following screen.



12. In the text box labelled “User name:” (highlighted in blue), enter your uktelevision.tv username.

13. In the text box labelled “Password:” (highlighted in yellow), enter your uktelevision.tv password.

Optionally, check the “Remember this password” checkbox (highlighted in green) and you won’t have to enter your password when you connect to uktelevision.tv.

14. Click the “Create” button.

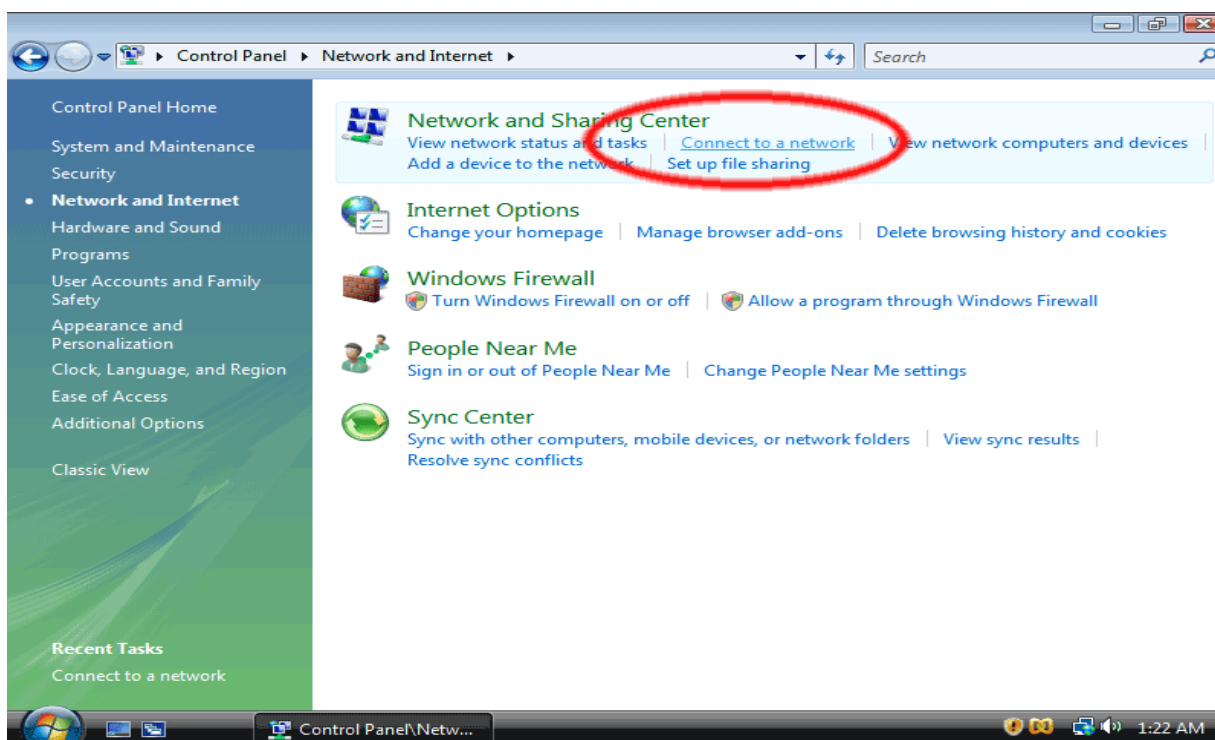
Your connection is now ready, and you will the sign in process should start automatically.

ADVANCED SETTINGS

When you setup the connection, these advanced settings should default to the correct setting.

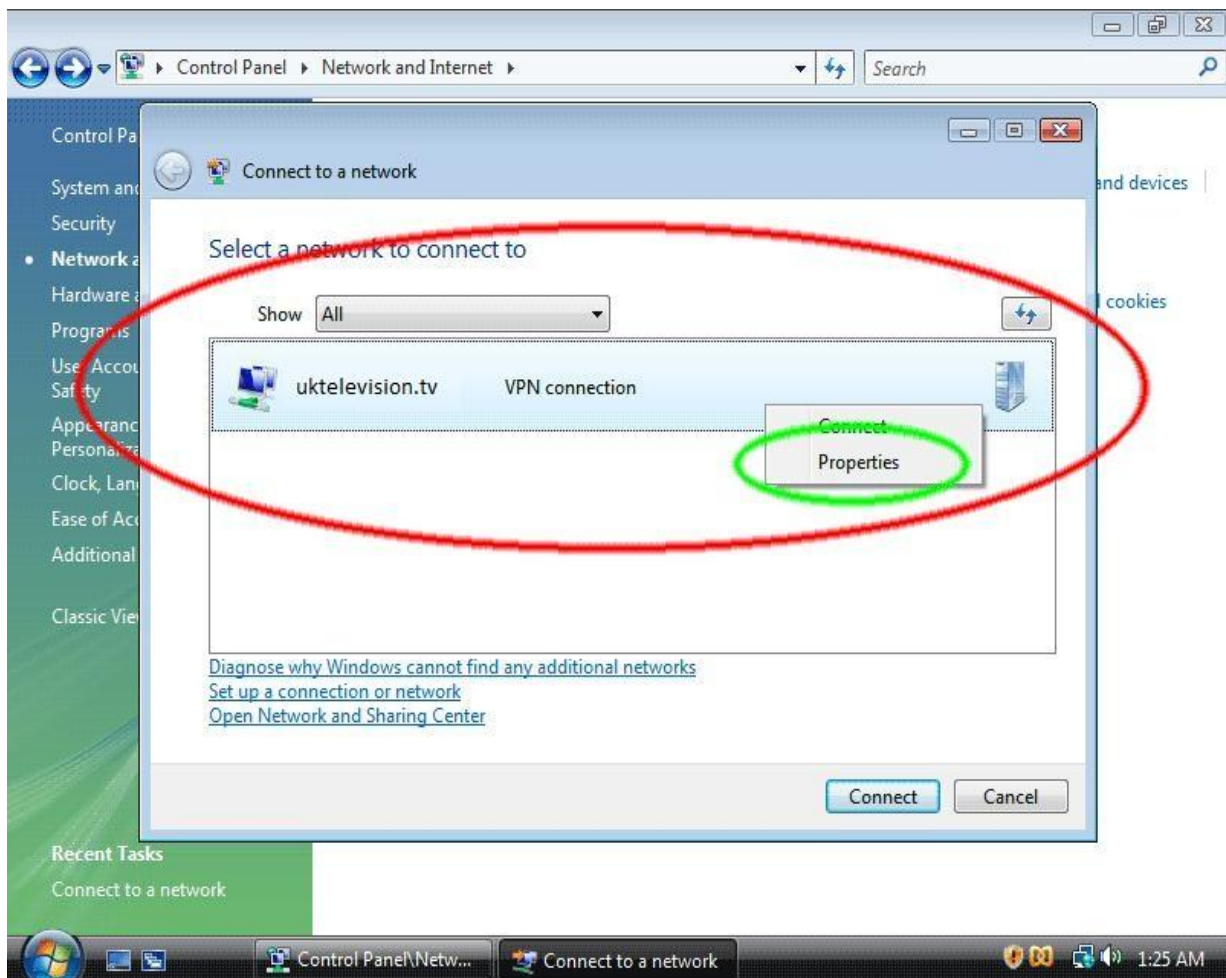
Should you wish to change or check these settings, please follow these steps:

1. Now click on “Connect to a network” again.

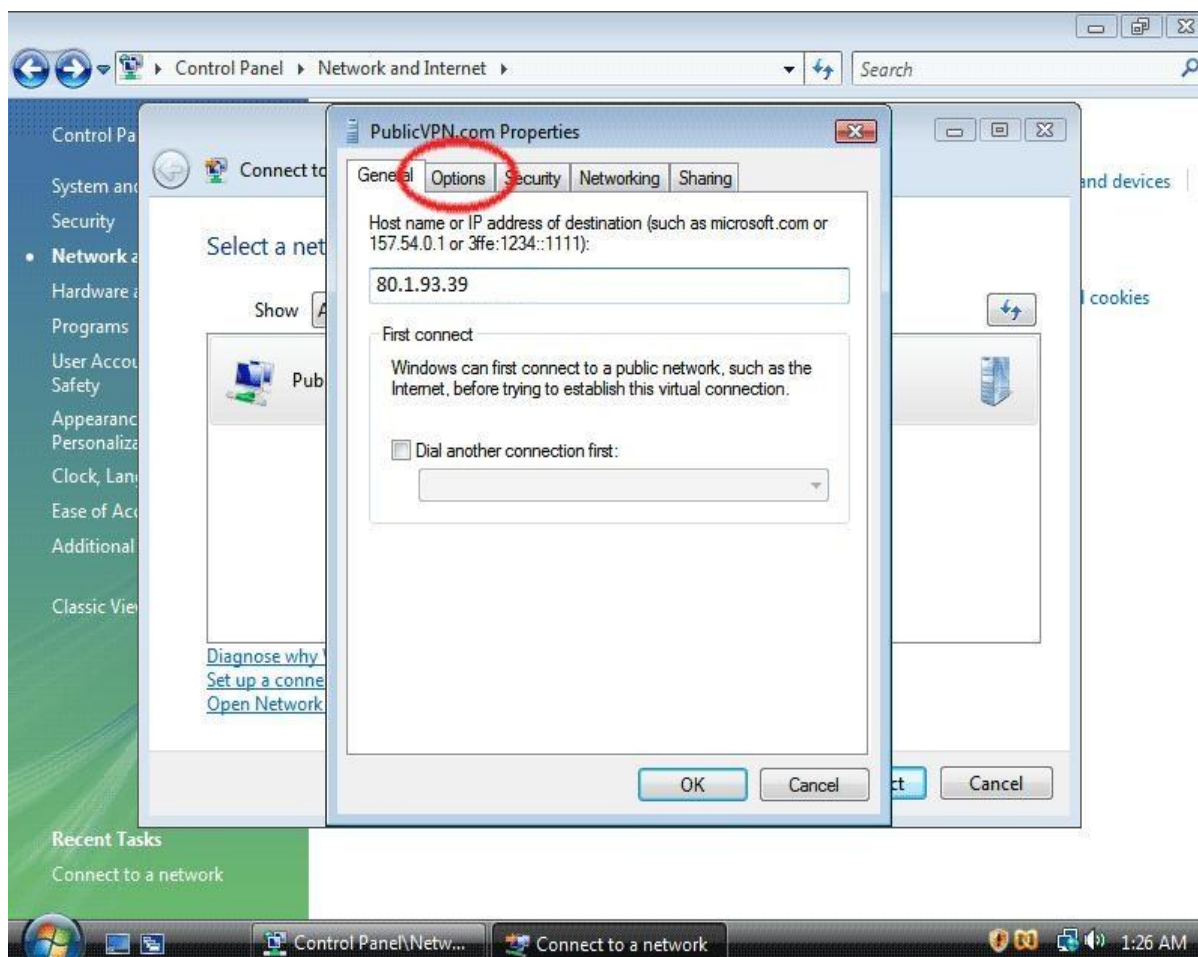


In the “Connect to a network” screen, you should see the uktelevision.tv connection that we set up. To connect to the service at a later time, simply click here.

2. Right-click on the uktelevision.tv connection document (circled in red), and choose "Properties" (circled in green) from the menu.

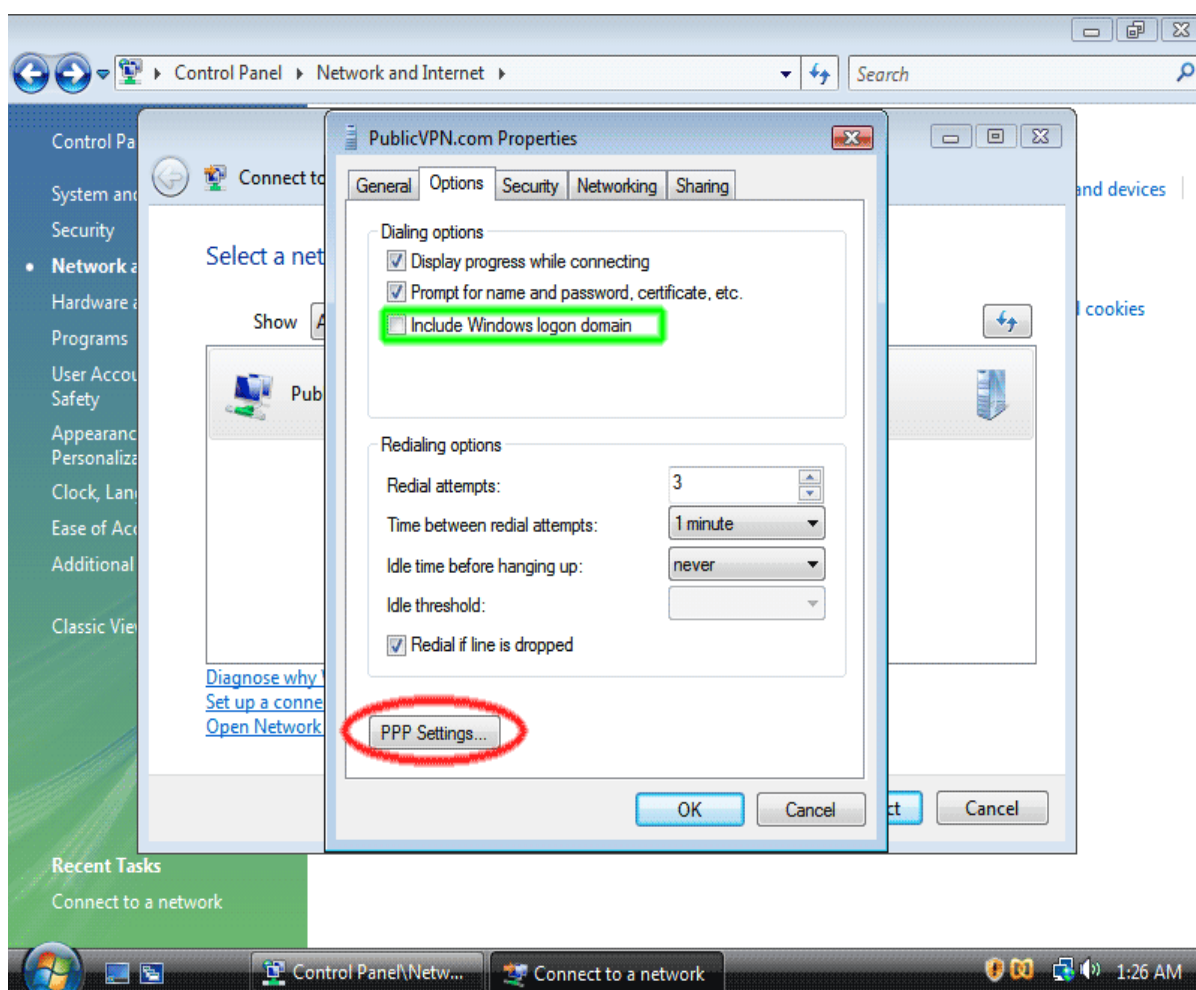


3. In the property window, click the “Options” tab.

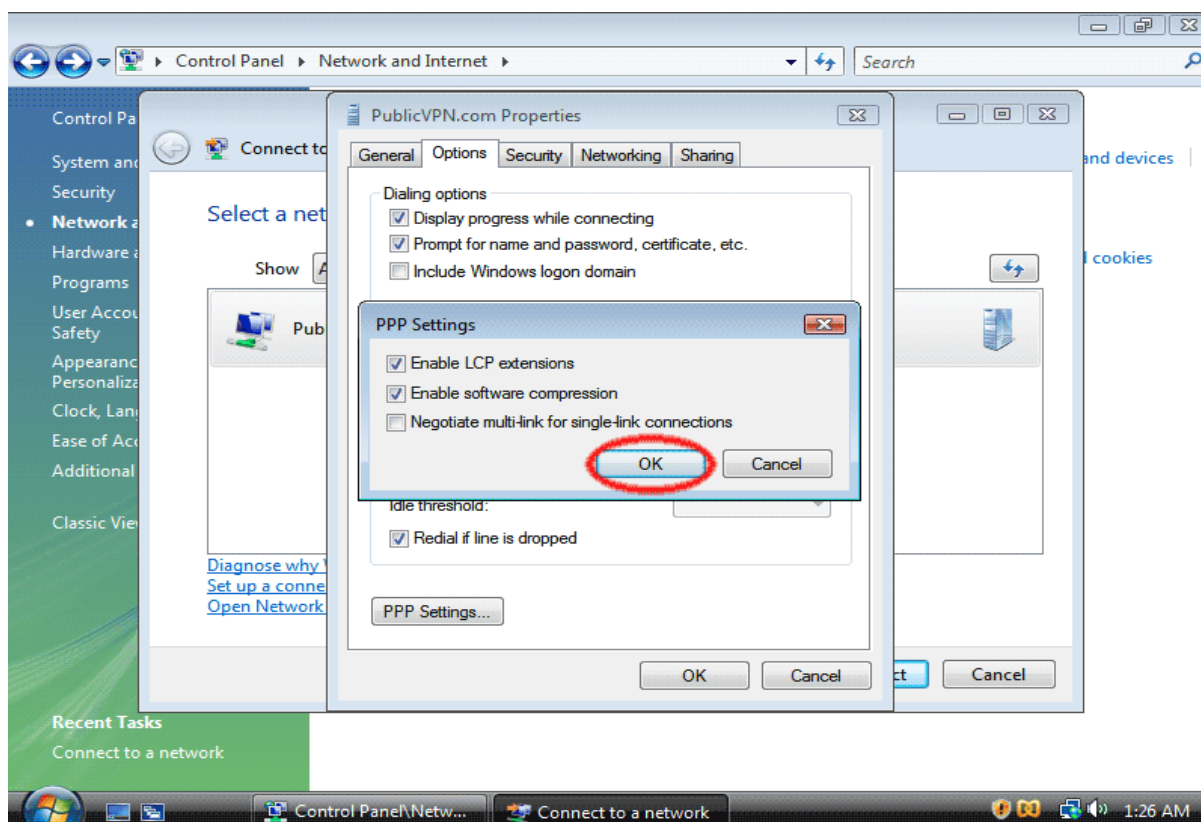


In the “Options” tab, make sure the checkbox labelled “Include Windows logon domain” (highlighted in green) is unchecked.

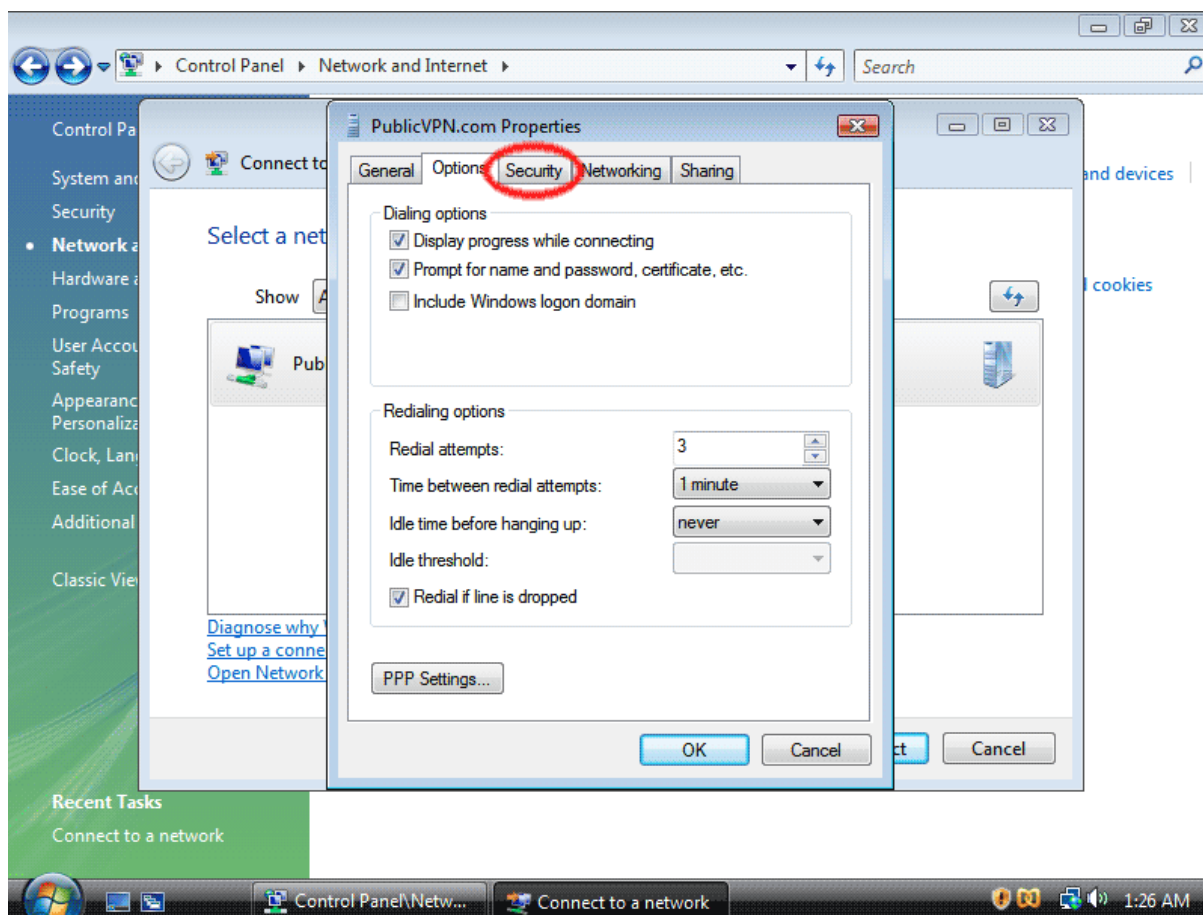
Then click the “PPP Settings...” button (highlighted in red).



4. In the “PPP Settings” dialog box, make sure the settings look like the ones in the picture below, then click the “OK” button (highlighted in red).



5. Click the “Security” tab, which is highlighted in red.



Congratulations, you should now be able to successfully connect to the uktelevision.tv PPTP VPN service.